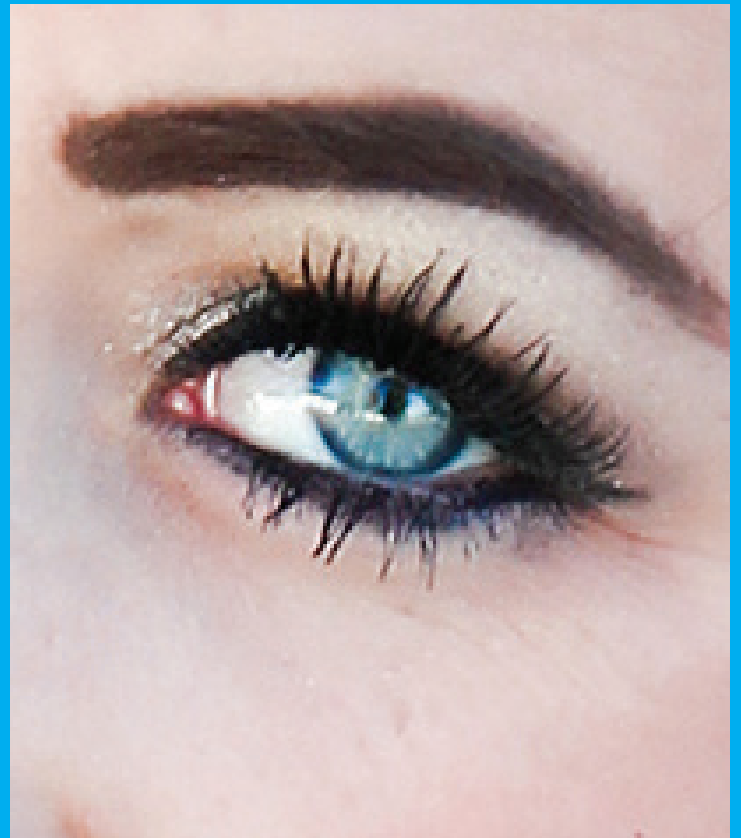


How to Sharpen Your Images

Photoshop Tutorial by
Brooks McFadden



Step 1

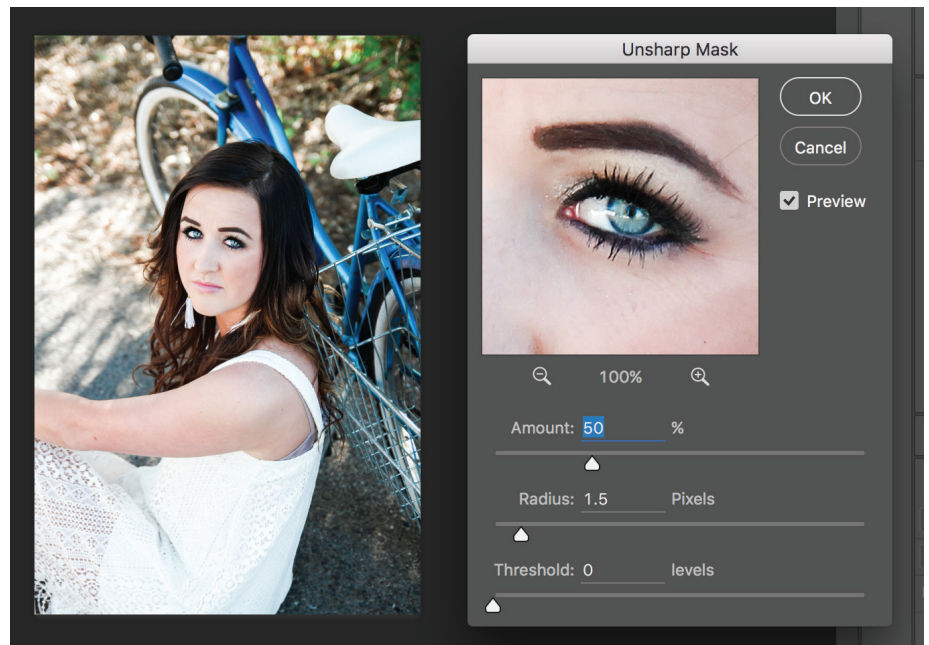
Make a Copy (CMND J for Mac, CTRL J for PC, or drag the background copy in the layer palette down to the icon with the turned page in the same palette).

Step 2

Go to filter > Sharpen > Unsharp Mask

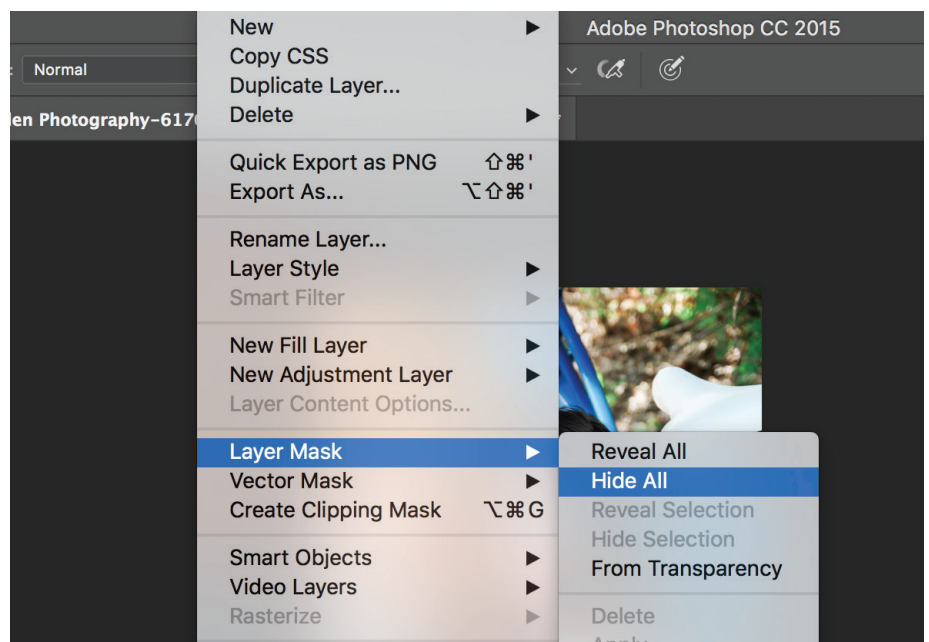
Step 3

Adjust the Amount no greater than 50 and the Radius no more than 1.5 and apply.



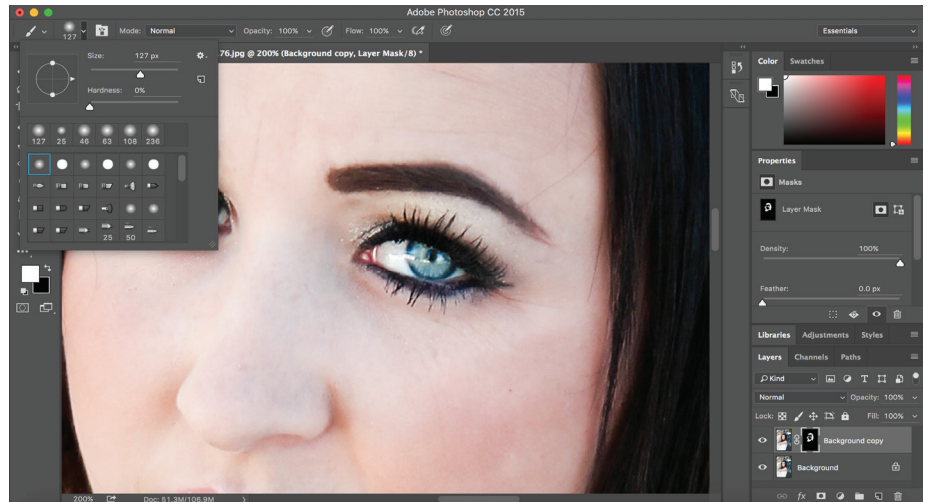
Step 4

For portraits mainly want the hair and eyes in focus, so create a mask over the copy. Go to Layer > Layer Mask > Hide all. A black mask should appear to right of the copied layer.



Step 5

Grab the brush tool and select the white color to paint on the black mask. This will reveal the sharp edit on the background copy. You can adjust the size and hardness of the brush in the top left to your need.



Step 6

After you have painted on the mask to reveal the sharpened areas that you desire, then go ahead and flatten the image. Go to layer > flatten image.

Step 7

Make any other adjustments as necessary and save.